



TEGERA® 417

Synthetic leather glove, fully lined, 0,7 mm synthetic leather, polyester, fleece, Cat. II, grey, black, blue, chrome free, soft, elasticated 360°, for allround work

PROPERTIES

Good fingertip sensitivity, flexible, durable, good grip, good fit, extra comfortable

SPECIFICATION

TYPE OF GLOVE Cold insulation gloves

CATEGORY Cat. II

SIZE RANGE (EU) 8, 9, 10, 11

PALM MATERIAL Synthetic leather

PALM THICKNESS 0,7 mm

BACK MATERIAL Polyester

LINING Fully lined

LINING MATERIAL Fleece

DEXTERITY 3

FASTENING Elasticated 360°

LENGTH RANGE 250-270 mm

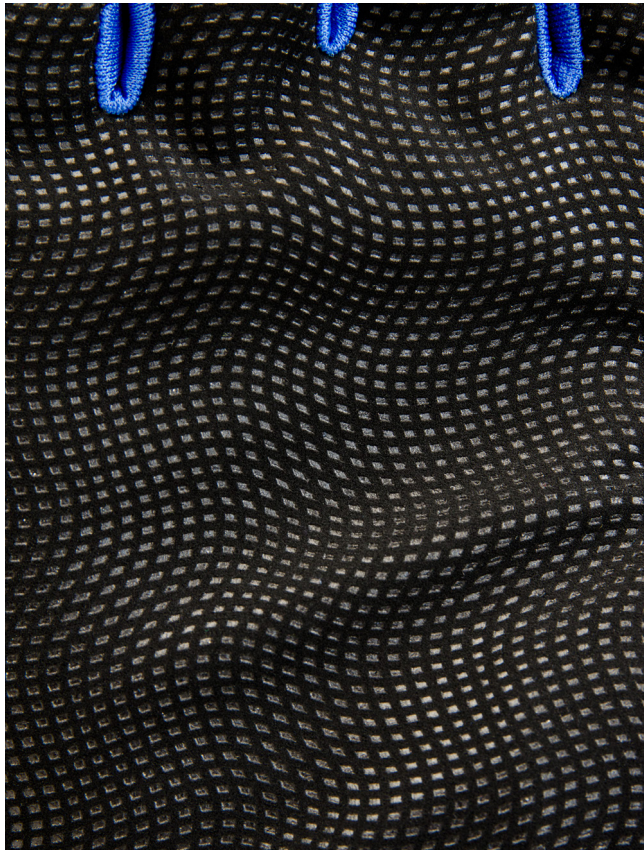
COLOUR Grey, black, blue

PAIRS PER PACKAGE/CARTON 6/60

DISPLAY Hook with hangtag

OUTER MATERIAL SPECIFICATION Polyurethane, polyester, natural latex

INNER MATERIAL SPECIFICATION Polyester



TEGERA® 417

FEATURES

Chrome free, reinforced palm, soft

PRIMARY PROTECTION

Prevents risk of, chrome allergy, abrasion injuries, blisters, grazes, scratches, lacerations, contact with dirt, drying out, chapping

PRIMARY ENVIRONMENTS OF USE

Slippery environments, dry environments, cold environments, dirty environments

PRIMARY AREAS OF USE

Inspection work, machine operating, installation work, transport work, machine driving, warehouse work

PRIMARY INDUSTRIES OF USE

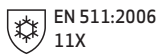
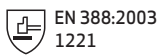
Agriculture, automotive, transportation, utilities, building and construction, logistics, HoReCa, facilities, service, retail

TYPE OF WORK

Medium weight

2(3)

CE Cat. II



All values for the specified product are indicated without tolerances and may vary to actual value for individual products. We reserve the right to modify or update the information in this document without prior notice.

2018-01-03

ejendals
PROTECTING HANDS AND FEET

EJENDALS AB

Box 7, SE-793 21 Leksand, Sweden

Phone +46 (0) 247 360 00

Fax +46 (0) 247 360 10

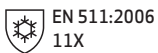
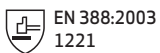
info@ejendals.com

order@ejendals.com

www.ejendals.com



CE Cat. II



TEGERA® 417

EC TYPE EXAMINATION

Notified Body: 0321 SATRA Technology Centre, Wyndham Way, Telford Way, Kettering, Northamptonshire, NN16 8SD, United Kingdom

COMPLIANCE DESCRIPTION

EN 420:2003 + A1:2009 Protective gloves - general requirements and test methods

EN 388:2003 Protective gloves against mechanical risks

Property	Level Achieved	(Maximum Performance)
A) Resistance to abrasion (No. of revolutions)	1	(4)
B) Resistance to cutting (Index)	2	(5)
C) Tear resistance (Newton)	2	(4)
D) Puncturing resistance (Newton)	1	(4)

EN 388 - Testing (specifies the requirements that apply for each safety level).

Level of protection/Performance level	1	2	3	4	5
A) Resistance to abrasion (No. of revolutions)	100	500	2000	8000	
B) Resistance to cutting (Index)	1,2	2,5	5,0	10,0	20,0
C) Tear resistance (Newton)	10	25	50	75	
D) Puncturing resistance (Newton)	20	60	100	150	

EN 511:2006 Protective gloves against cold

ejendals
PROTECTING HANDS AND FEET

EJENDALS AB

Box 7, SE-793 21 Leksand, Sweden

Phone +46 (0) 247 360 00

Fax +46 (0) 247 360 10

info@ejendals.com

order@ejendals.com

www.ejendals.com

All values for the specified product are indicated without tolerances and may vary to actual value for individual products. We reserve the right to modify or update the information in this document without prior notice.